

Ice Control **Brine Pro™ 2000**

SNOWEX✓



Ice Control
Brine Pro 2000

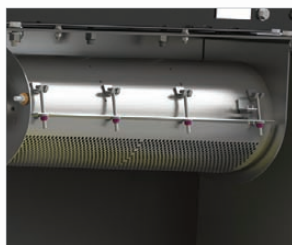
Brine Maker System

Brine Pro™ 2000

Now, just about anyone can make brine. That's because the Brine Pro 2000 system simplifies production with user-friendly operation, automatic salinity control and easy no-splash salt refilling. Plus, the system is compatible with low-flow water input and 220VAC electrical sources that are available in most shops. Backed by a 2-year warranty, the BP-2000 is a cost-effective, patent-pending solution for producing de-icing material. It doesn't get easier than this.



Features



Hammer Mill Salt Grinder

The hammer mill salt grinder is designed to create consistent particle sizes, which accelerates the dissolve rate and expedites clean-out.



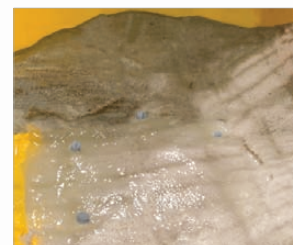
Dry Hopper System

Unlike most other brine makers, you don't have to dump salt into the mixing chamber. Just add it into the 1-cubic-yard dry hopper, and the BP-2000 will take it from there. The hopper offers visual salt level indication, letting you know when it's time to refill.



Automatic Salinity Control

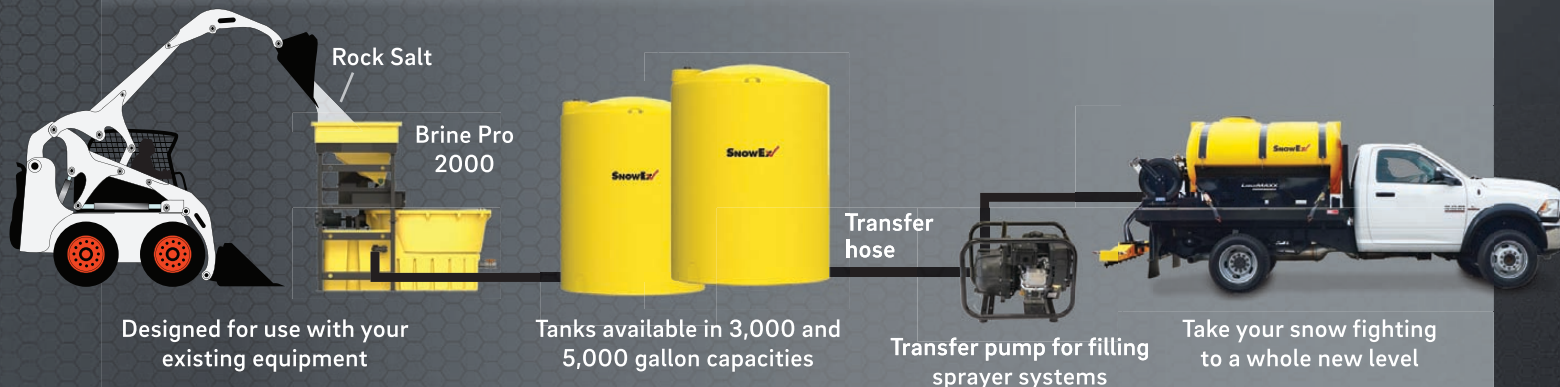
In order for brine to be effective, it needs to have the correct amount of salt and water. Thanks to automatic salinity control – made even easier with an intuitive touchscreen panel – the operator can sit back and let the machine do the work.



Mixing Chamber With High Circulation Pump

The mixing chamber includes a high-volume circulation pump. This feature helps ensure a uniform brine mixture up to 1,050 gallons per hour (3,974.7 L/h).

The Complete Brine Making System



Designed for use with your existing equipment

Tanks available in 3,000 and 5,000 gallon capacities

Transfer pump for filling sprayer systems

Take your snow fighting to a whole new level

| | DIMENSIONS | | | | CAPACITY | | | | INPUT REQUIREMENTS | |
|---------|------------------------|--------------------|-------------------|-------------------|------------------------|------------------------|---------------------------------|---|----------------------------------|-------------------------|
| | Empty Weight | Overall Length | Overall Height | Overall Width | Mixing Tank | Brine Tank | Hopper Volume | Brine Production | Inlet Flow Rate | Electrical Connection |
| BP-2000 | 1,520 lb (680.4 kg) | 100" (254.0 cm) | 89" (226.0 cm) | 86" (218.4 cm) | 265 gal (1,003.0 L) | 285 gal (1,078.8 L) | 1 cu yd of salt (0.765 cu m) | Up to 1,050 gal/h (Up to 3,974.7 L/h)* | Up to 15 gal/min (56.8 L/min) | 220VAC, single phase |

*Includes salt

NOTE: For best results use pure white clean salt with no additives.

TrynEx International, LLC | 531 Ajax Drive | Madison Heights, Michigan 48071

TrynEx International, LLC reserves the right under its product improvement policy to change construction or design details and furnish equipment when so altered without reference to illustrations or specifications used. TrynEx International, LLC offers a limited warranty for all brine making and dispensing equipment. See separately printed page for this important information. The following are registered (®) or unregistered (™) trademarks of Douglas Dynamics, LLC: Brine Pro™, Liqui Maxx™, SnowEx®.